

DOE Reprocessing Waste and DOE Spent Nuclear Fuel Inventories

Mark Gilbertson

Associate Principal Deputy Assistant Secretary for Regulatory & Policy Affairs

Energy Communities Alliance Webinar on High-Level Radioactive Waste
February 24, 2021

DOE Reprocessing Waste Locations

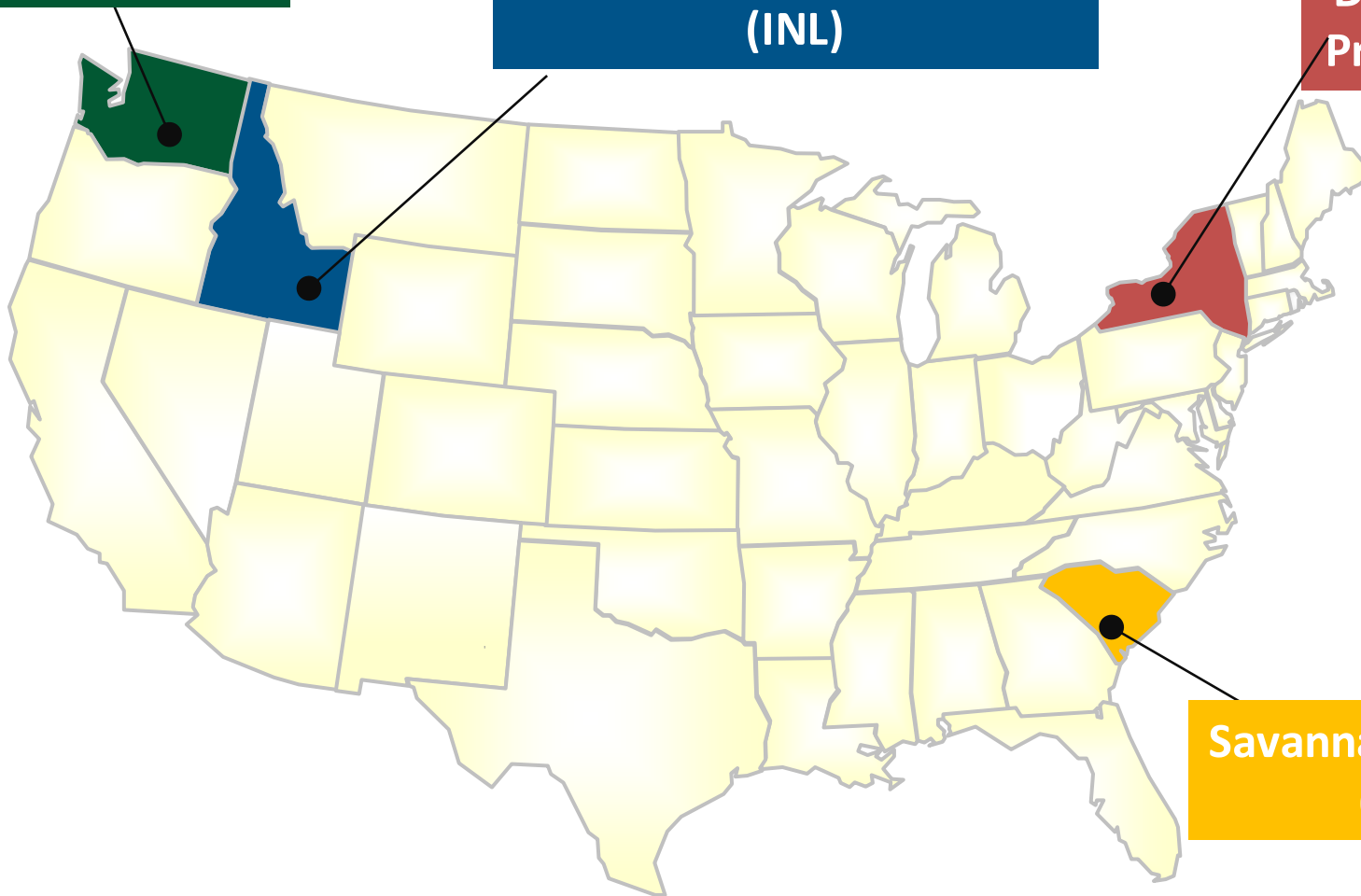
Hanford Site

Idaho National Laboratory (INL)

*West Valley Demonstration Project (WVDP)

*West Valley reprocessing waste was generated from commercial activities and are not of defense origin.

Savannah River Site (SRS)



Site	Inventory	Key Facilities
Hanford	<ul style="list-style-type: none"> • 56 million gallons of tank waste 	<ul style="list-style-type: none"> • 177 Tanks • Waste Treatment and Immobilization Plant • Integrated Disposal Facility (low-activity waste)
INL	<ul style="list-style-type: none"> • 900,000 gallons of sodium-bearing waste • 4,4000 cubic meters of calcine 	<ul style="list-style-type: none"> • Integrated Waste Treatment Unit • Bin sets 1-6 (calcine storage)
SRS	<ul style="list-style-type: none"> • ~4,190 glass canisters in storage • ~4,000 projected glass canisters 	<ul style="list-style-type: none"> • Glass Waste Storage Buildings • Defense Waste Processing Facility • Salt Waste Processing Facility
WVDP	<ul style="list-style-type: none"> • 278 glass canisters 	<ul style="list-style-type: none"> • Dry Cask Storage Area

- All waste is disposed in accordance with each waste disposal facility's waste acceptance criteria.
- Each waste disposal site is licensed to dispose of specific waste types (see map below for examples).

Hanford Site

- Onsite LLW/MLLW and Naval Reactors LLW
- Integrated Disposal Facility awaiting commissioning (onsite vitrified low-activity waste)



★ DOE Disposal Facility ■ Commercial Disposal Facility

CERCLA – Comprehensive Environmental Response, Compensation and Liability Act; RCRA – Resource Conservation and Recovery Act

Hanford



Construction completed at Low-Activity Waste Facility (vitrification)



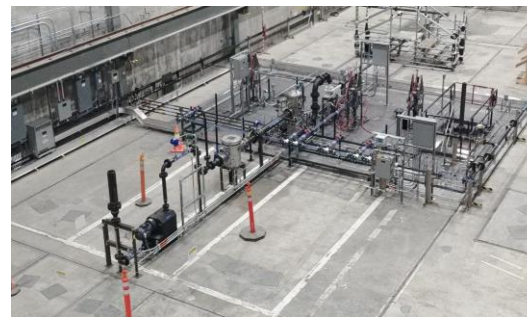
Hot Commissioning of Salt Waste Processing Facility

SRS

INL



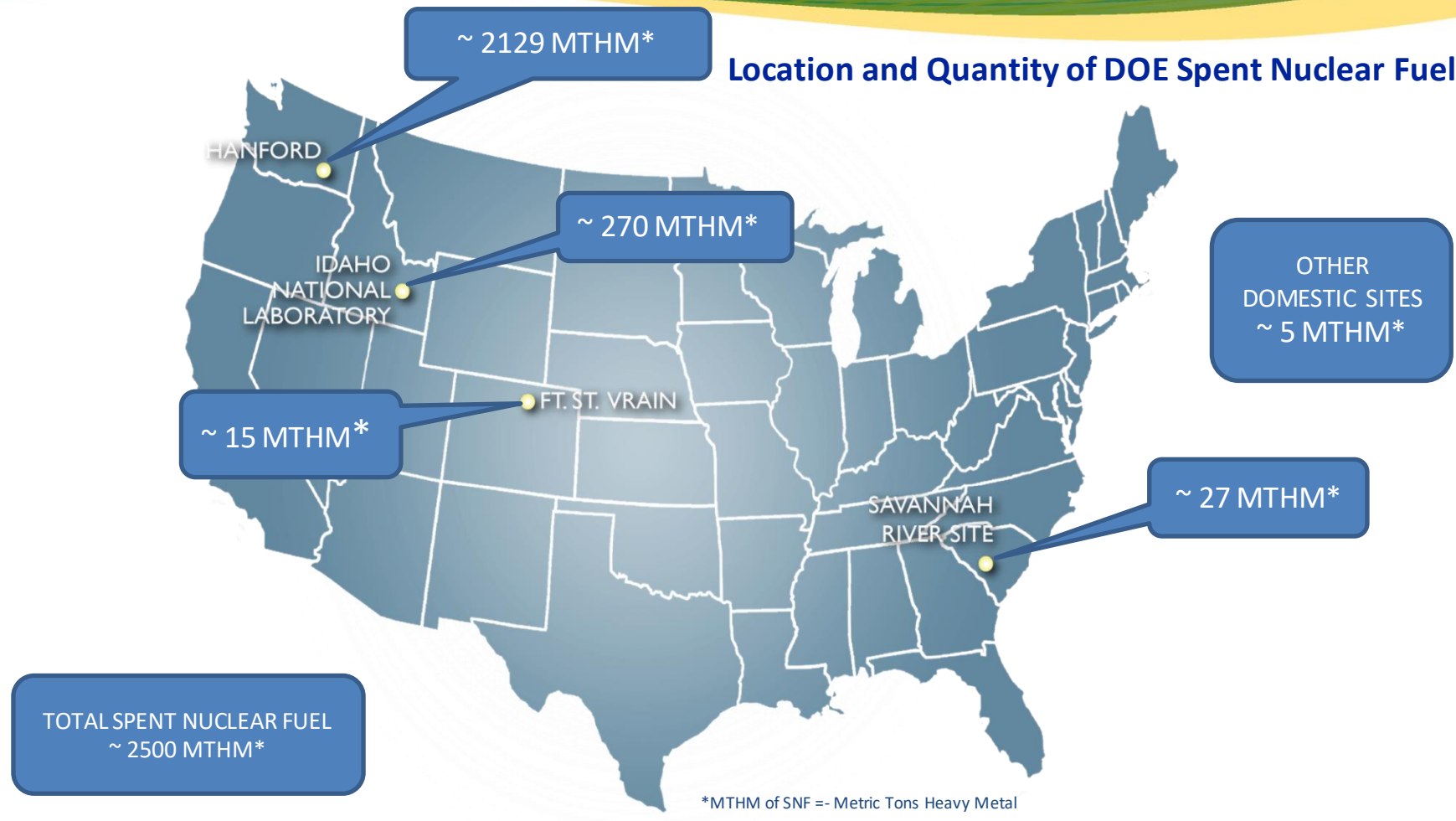
Progress toward start-up of Integrated Waste Treatment Facility



Calcine retrieval demonstration

Spent Nuclear Fuel

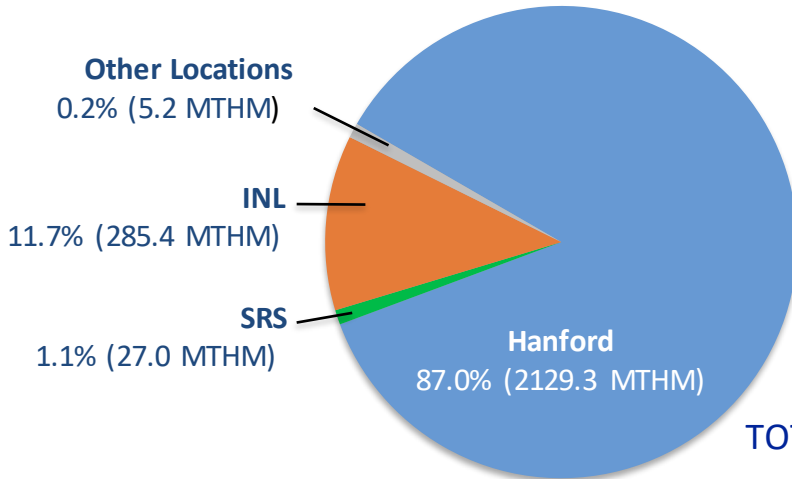
Location and Quantity of DOE Spent Nuclear Fuel



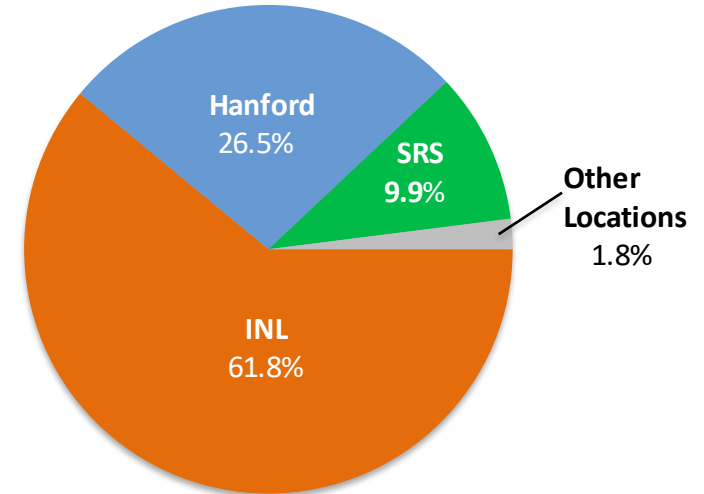
SNF is safely stored at four DOE sites. Minor amounts are stored at other locations, such as university research reactors.

Current SNF by Location

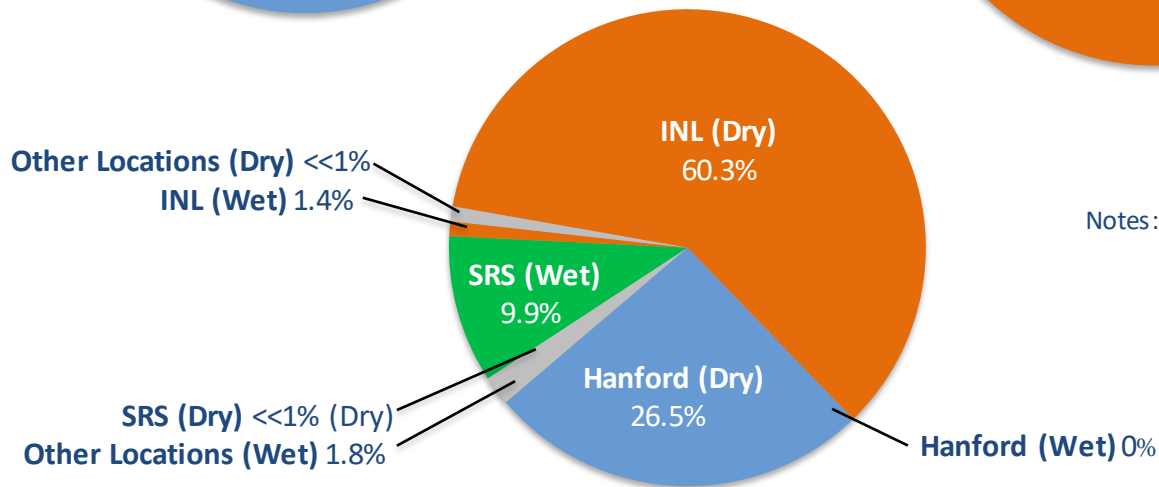
By MASS
TOTAL: 2446.9 MTHM



By VOLUME



By VOLUME (Dry vs Wet)
TOTAL: Dry 87%, Wet 13%



Notes: Pie Chart data exclude naval fuel. All Ft. St. Vrain fuel is included in the INL numbers.

Most SNF by mass is stored at Hanford, by volume at INL, and the majority is in dry storage.

- Protection of the surrounding communities and the environment are paramount to the Department of Energy's Office of Environmental Management (EM).
- EM will work with the new Administration and the local communities on the path forward for these reprocessing wastes and DOE SNF.
- EM will continue to execute timely decisions and innovative solutions for reprocessing waste and SNF until a disposal facility is available.